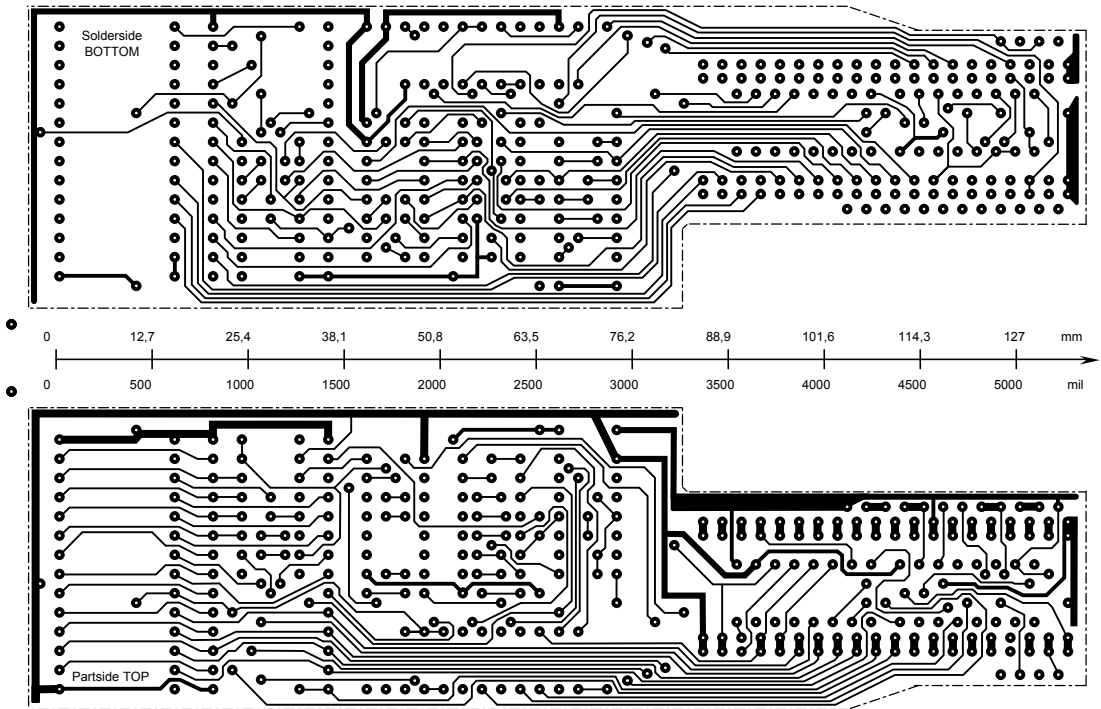
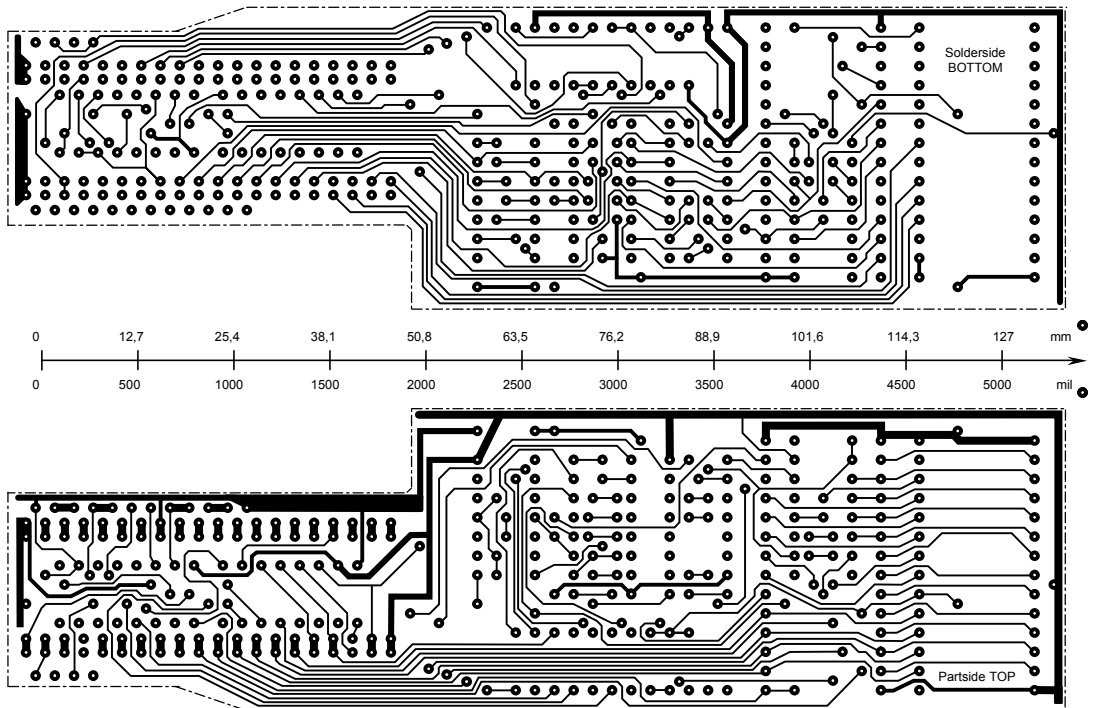


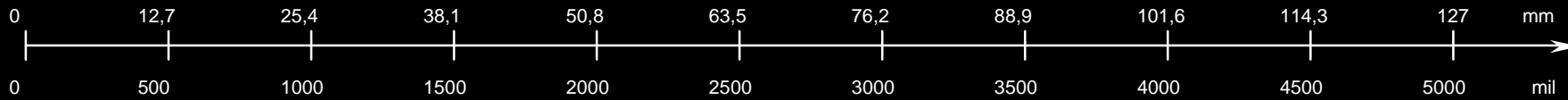
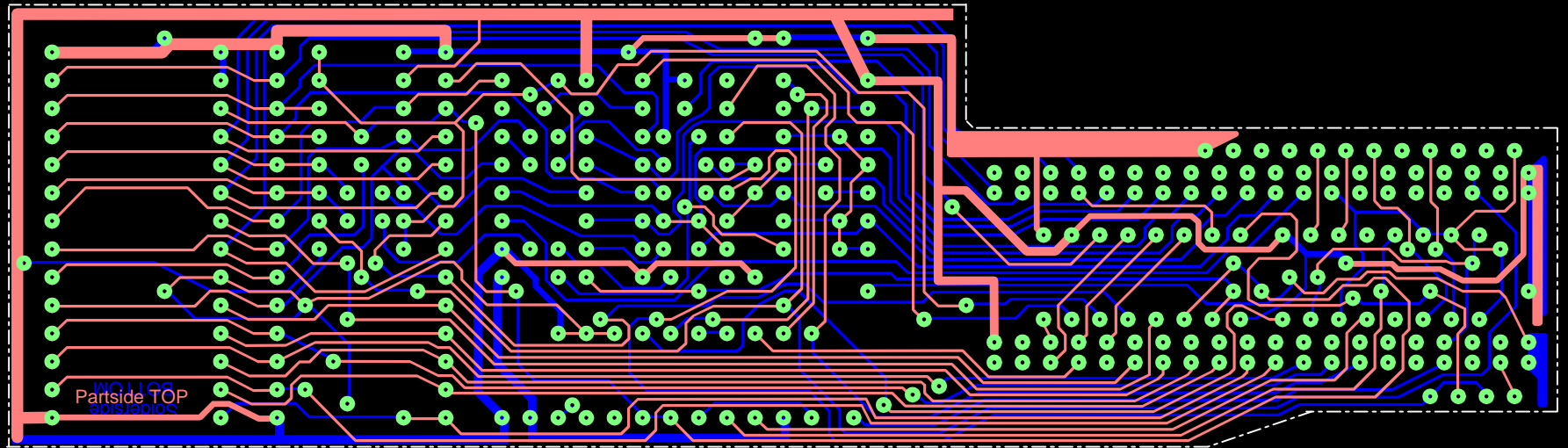
Reconstructed PCB (top and bottom layer) of Professional-DOS



Reconstructed PCB (top and bottom layer) of Professional-DOS;
mirrored for photo reproduction (already scaled correctly to 100%)

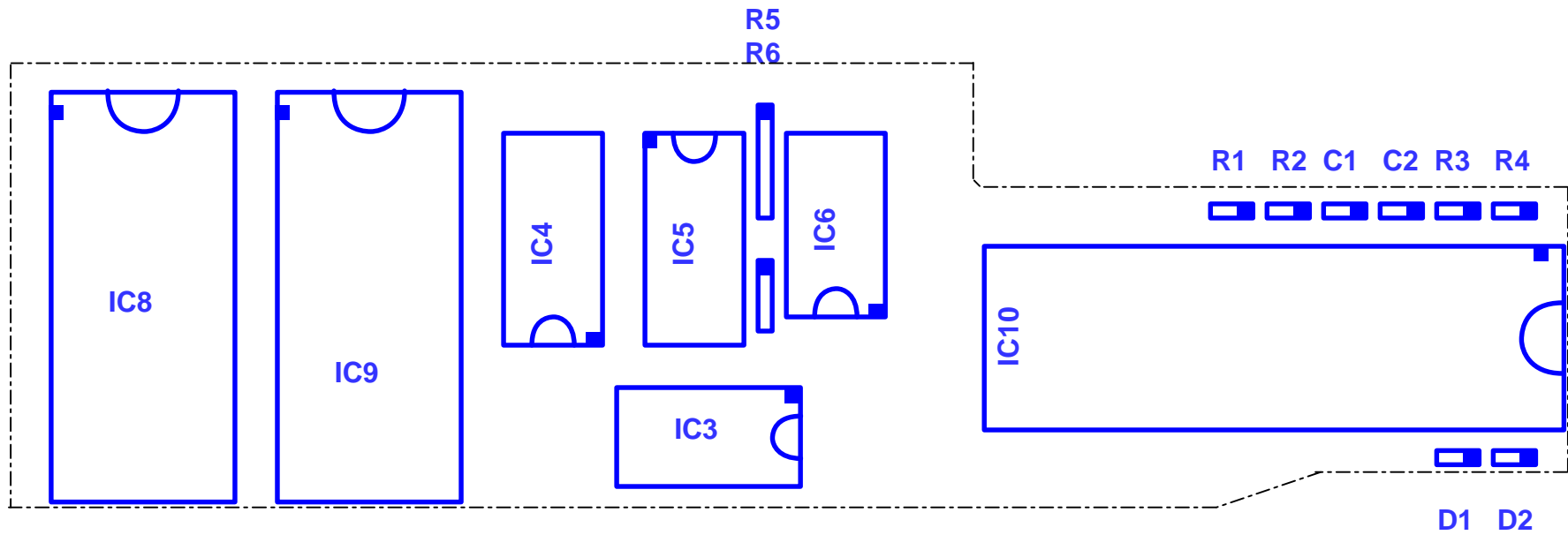
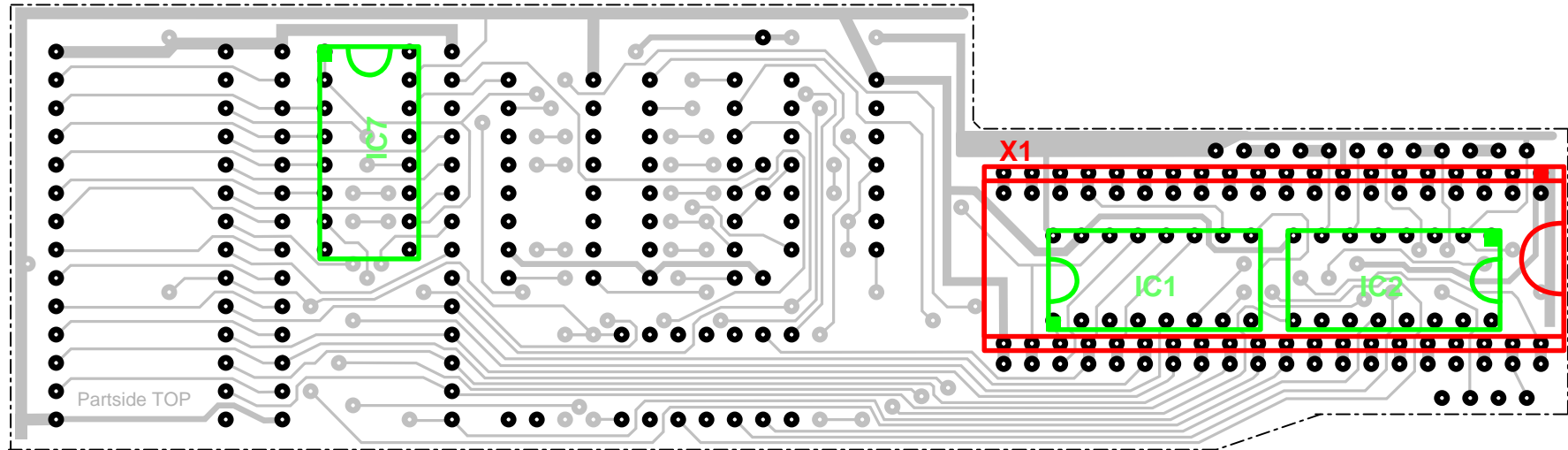


Two-layer view of the reconstructed PCB

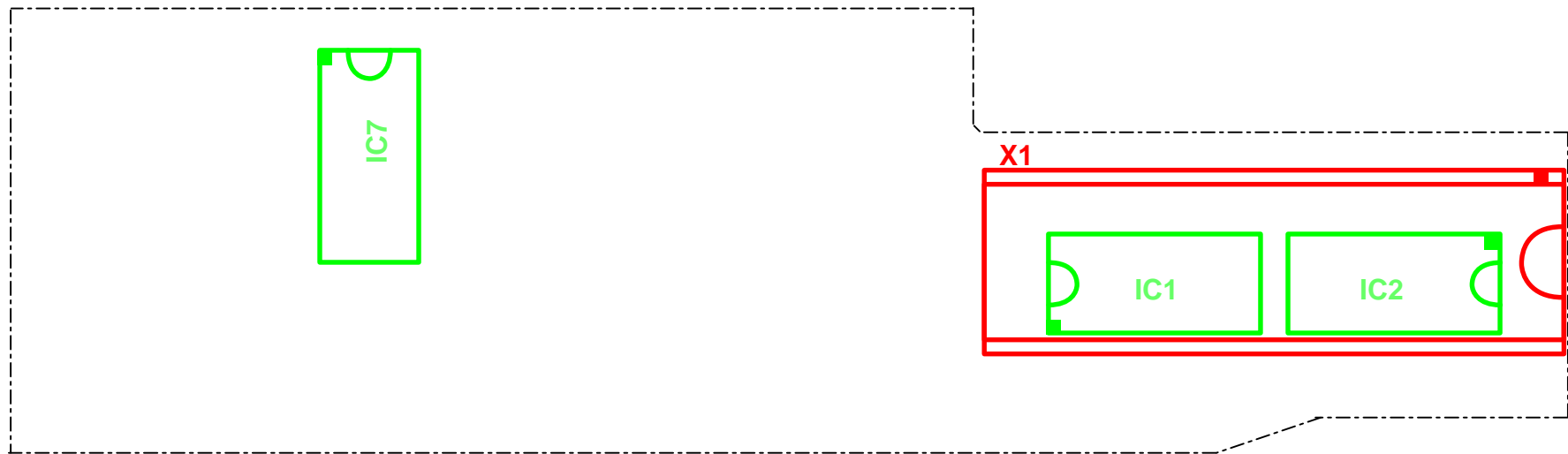
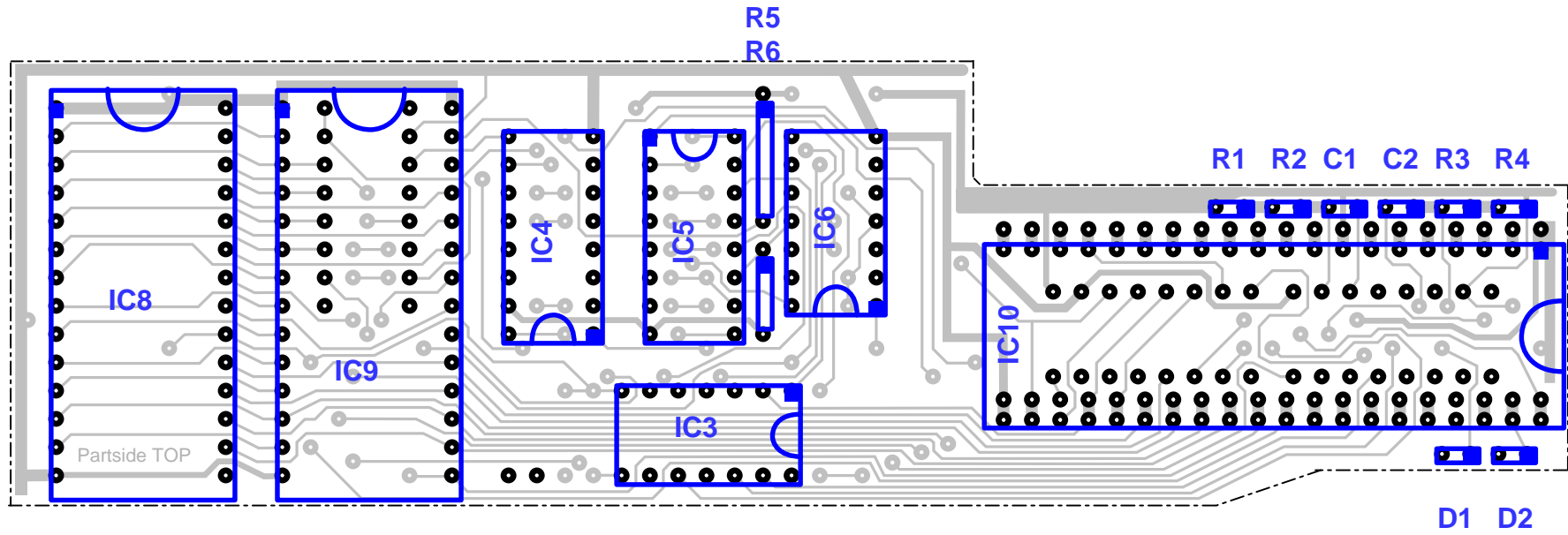


Partside TOP

PCB-Layout with the IC adaptor mounted onto the bottom side and parts mounted between sockets (first installation step)



PCB-Layout with directly mounted parts (second installation step)



Legend:

R1, R4:	Resistor, 1K5 \pm 1%
R2, R3:	Resistor, 9K1 \pm 1%
R5, R6:	Resistor, 1K8 \pm 1%
C1, C2:	Capacitor, 56 pF
D1, D2:	Diode, 1N4148
IC3:	74LS00, directly mounted onto the PCB
IC4:	74LS157, directly mounted onto the PCB
IC5:	74LS367, directly mounted onto the PCB
IC6:	74LS74, directly mounted onto the PCB
IC8:	EPR0M, 27128, placed into a socket
IC9:	Static RAM CMOS 8192x8, TC5565PL-15 or similar (6164, 6264LP-10, ...), placed into a socket
IC10:	empty socket, 40 pin (reserved for 6502 processor)
IC1:	82S123 (aka. 74S188), mounted below IC10
IC2:	74LS123
IC7:	74LS173, mounted below IC9 which has to be placed into a socket
X1:	IC adaptor, 40 pin, soldered onto the bottom side of the PCB

Pin 1 of all components is marked with a little square (■). In case of the diodes, pin 1 marks the cathode. In case of the resistors and capacitors, pin 1 is only marked for a description of the connection scheme.